



School Improvement in Sheffield

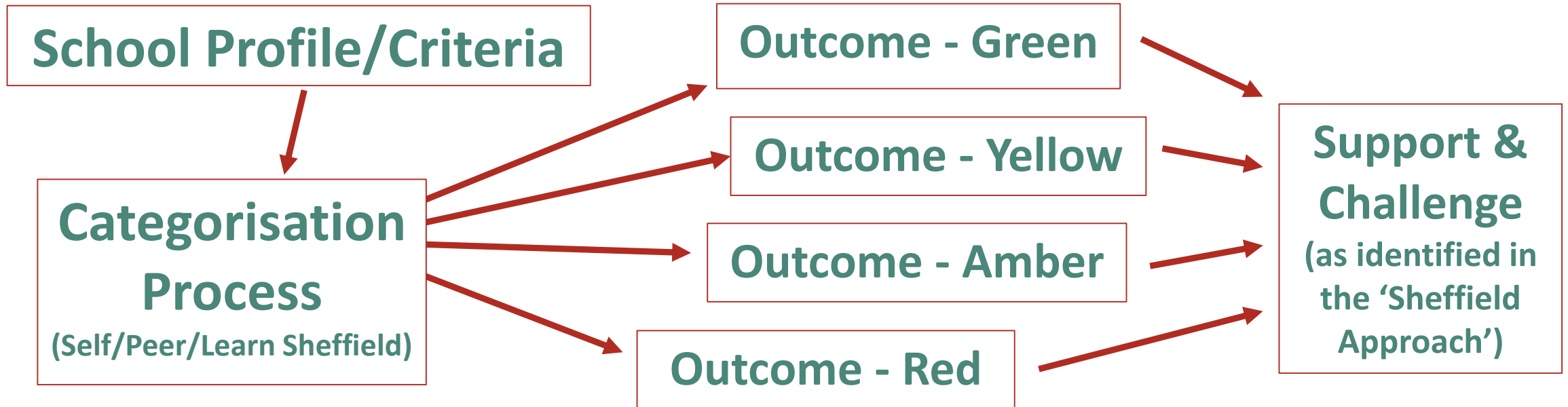
AEPA Conference - Wednesday 11th September 2019

School Improvement in Sheffield

Context

- Learn Sheffield is a not-for-profit schools company owned by publically-funded Sheffield schools and colleges (80%) and Sheffield City Council (20%).
- We are just starting our fifth year in operation.
- We are commissioned by Sheffield City Council to deliver statutory school improvement.
- The school improvement strategy works through nine partnership groups - 7 primary localities, Secondary Partnership & Special/IR Partnership.
- We also now (this is the second year) operate a school improvement subscription which 91% of schools sign up to (across all sectors and school types).

School Improvement Strategy 2019-2022



- Decision making in primary is taken through the Primary Improvement Board.
- Secondary and special decision making happens in the partnership group (with some use of steering groups for specific issues).

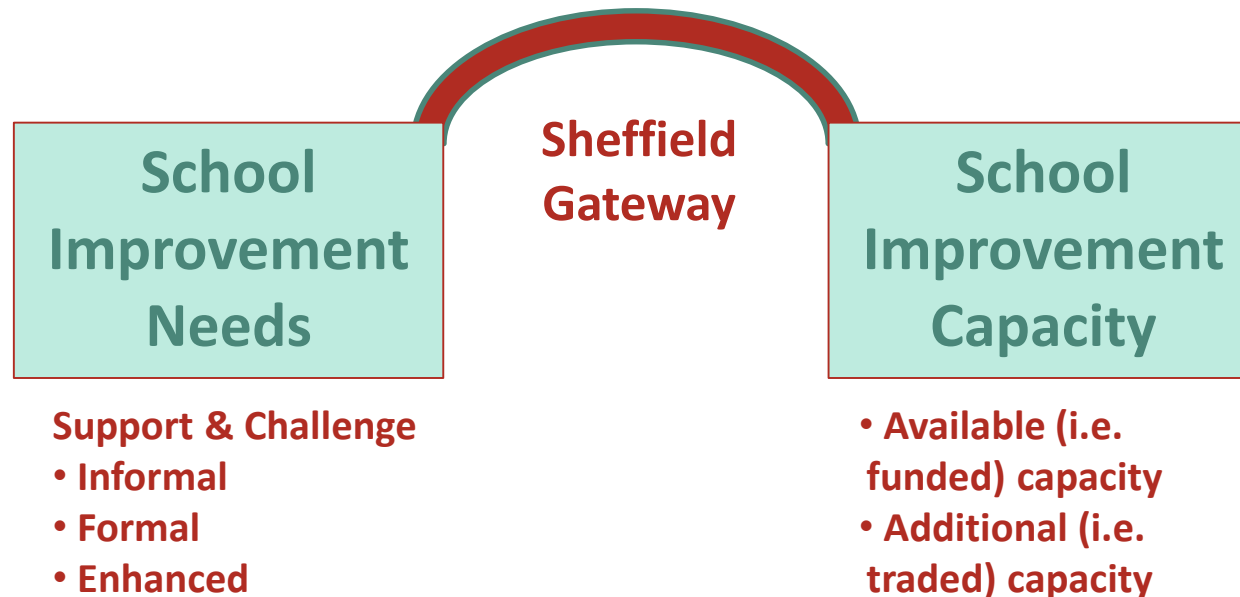
School Improvement in Sheffield

New Model

- New School Improvement Strategy comes into use from this September.
- Consulted upon and developed across the first half of last school year.
- Addresses some of the development points from our peer review – in particular increased use of system leadership capacity and greater sharpness.
- Also informed by on-going review of impact – in particular conversion rate for RI schools, learning from small number of ‘stuck schools’ and less-engaged schools.
- Takes account of the national landscape which continues to change focus but retains a pattern of funding ‘interventions’ and accredited support.

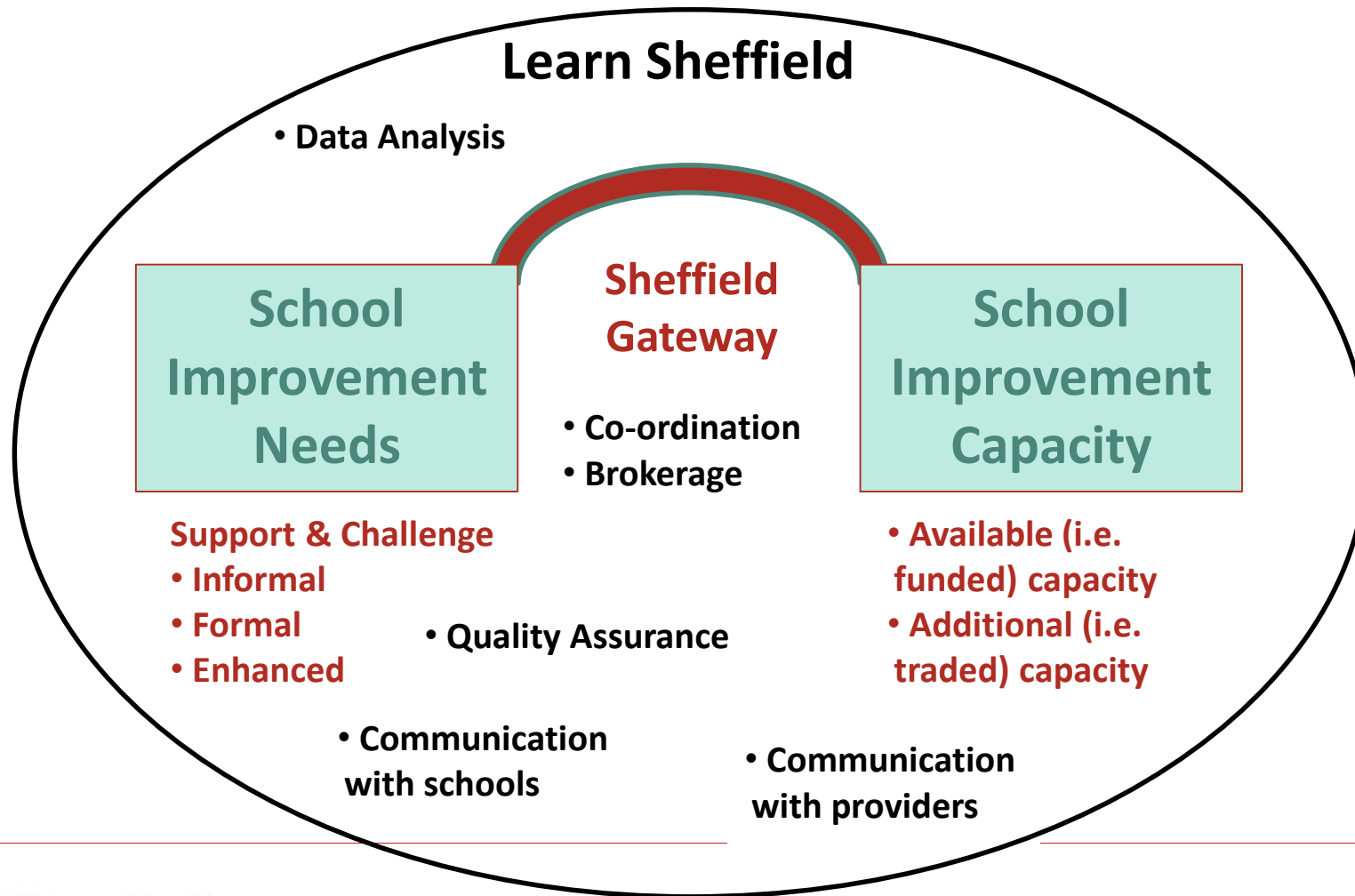
School Improvement Strategy 2019-2022

- This is about better identification of needs & capacity so that all available capacity has impact.
- The mechanism for this will be the 'Sheffield Gateway'

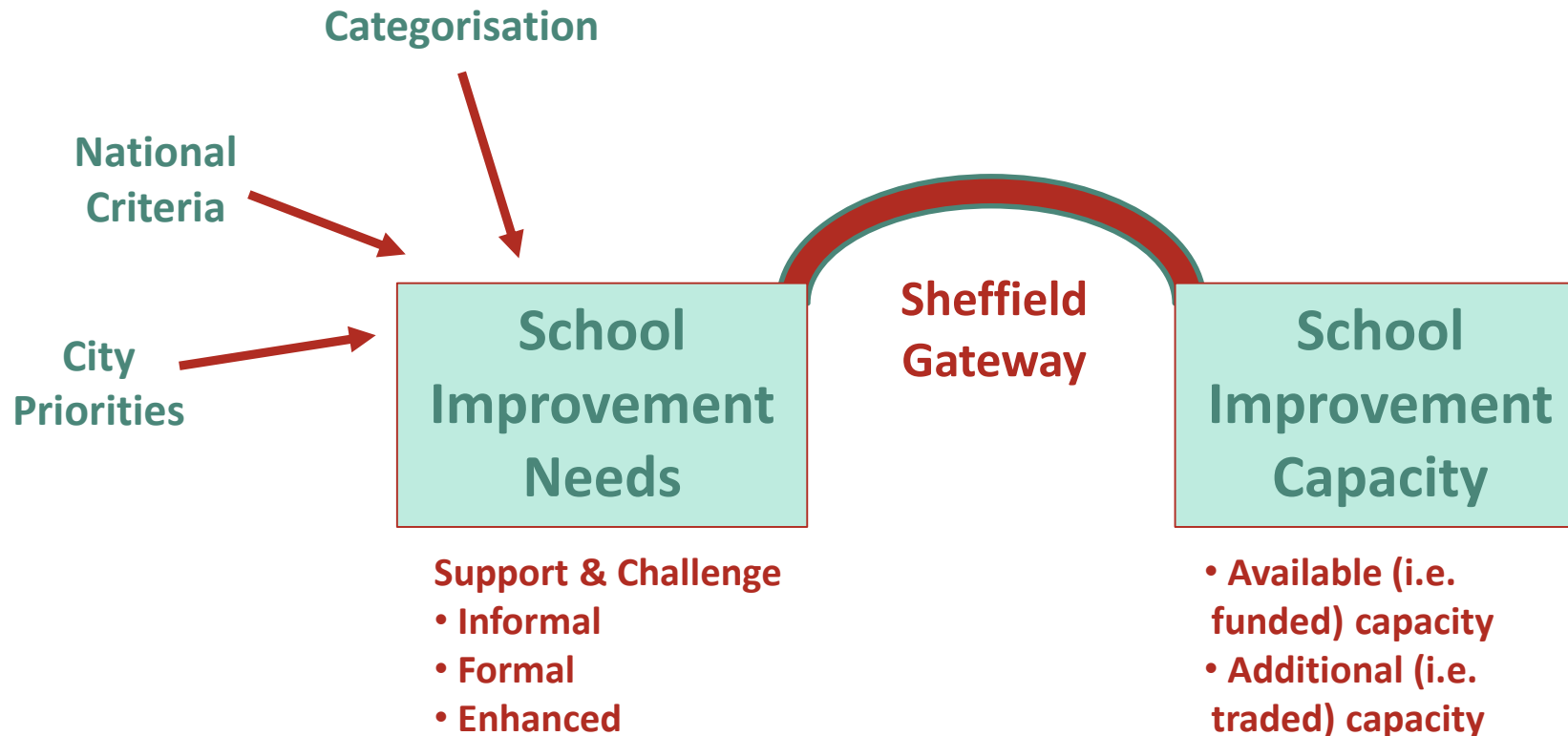


School Improvement Strategy 2019-2022

- The role of Learn Sheffield in this process is to provide the glue to hold the system together.

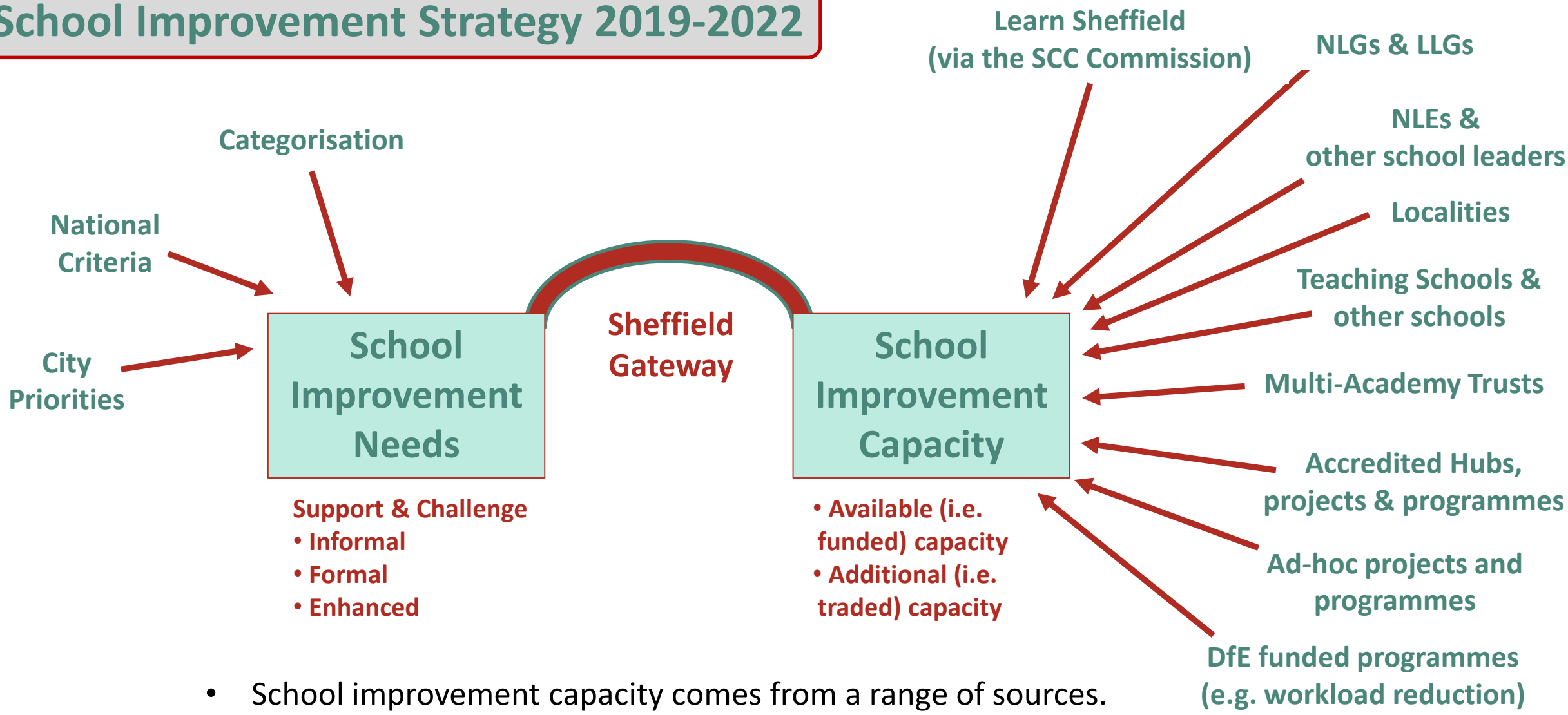


School Improvement Strategy 2019-2022

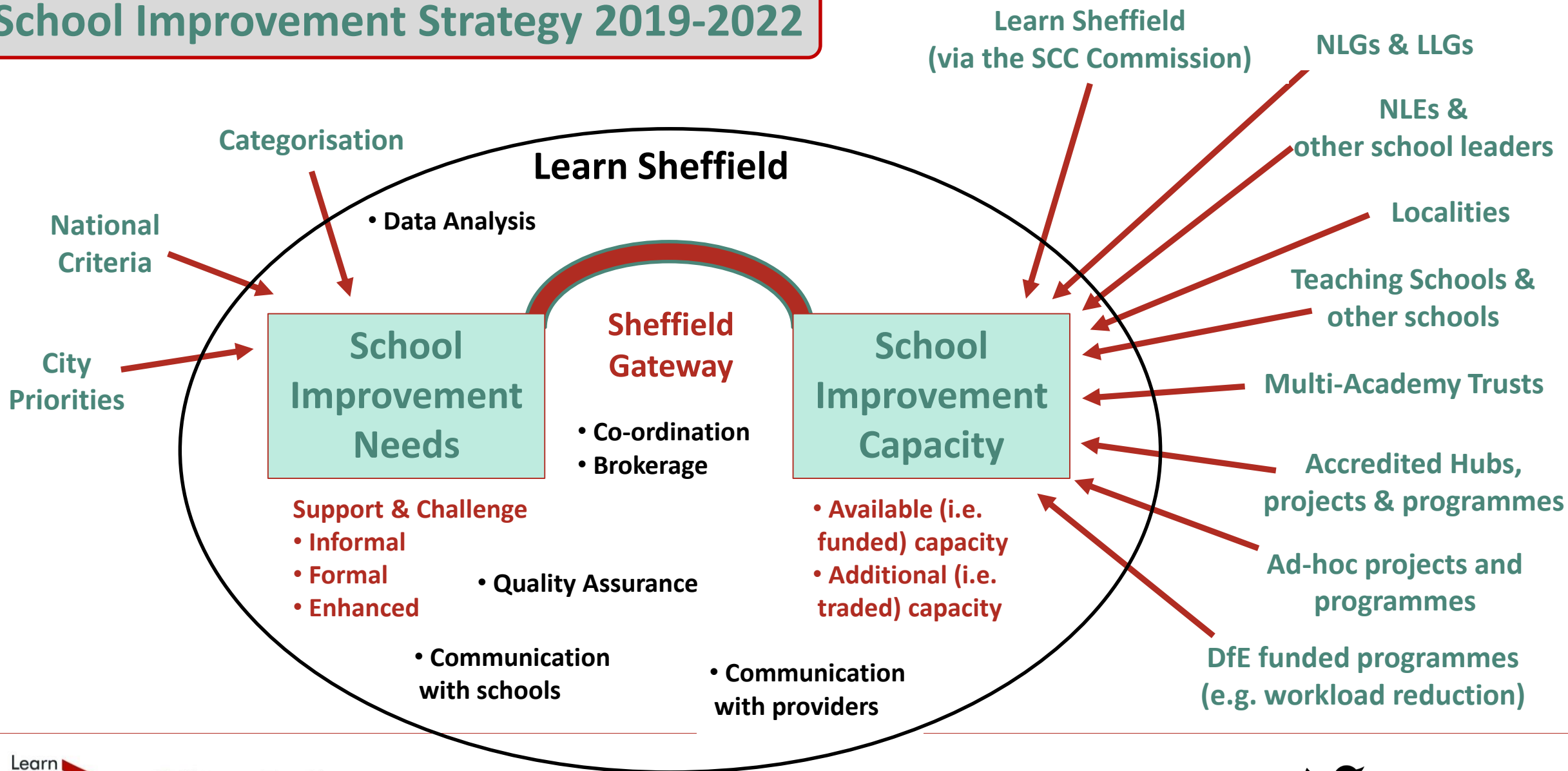


- The starting point for identifying school improvement needs is the categorisation process
- School improvement needs will also be identified through criteria for national programmes and the analysis that informs the identified city priorities

School Improvement Strategy 2019-2022



School Improvement Strategy 2019-2022



School Improvement in Sheffield

Sheffield Approach

1. School Improvement Needs will be identified through a categorisation process which will identify the support and challenge needs of Sheffield schools.
2. Other needs will be identified in relation to the criteria associated with available programmes and the analysis that identifies city priorities.
3. All available capacity will be identified and matched to these needs.
4. All additional capacity will be identified and matched to needs where it can be funded.
5. The system will be facilitated by Learn Sheffield through a mechanism called the Sheffield Gateway.
6. The Sheffield Gateway will operate throughout the year - need and capacity changes responded to.