



Challenge Partners and the power of peer review

Dr Kate Chhatwal, CEO

Our goal is to reduce educational inequality and improve the life chances of all children.

Through collaboration, challenge and professional development, we are working to ensure every school community can benefit from the combined wisdom of the whole system.



Excellence



Equity



**Courageous
leadership**



Challenge



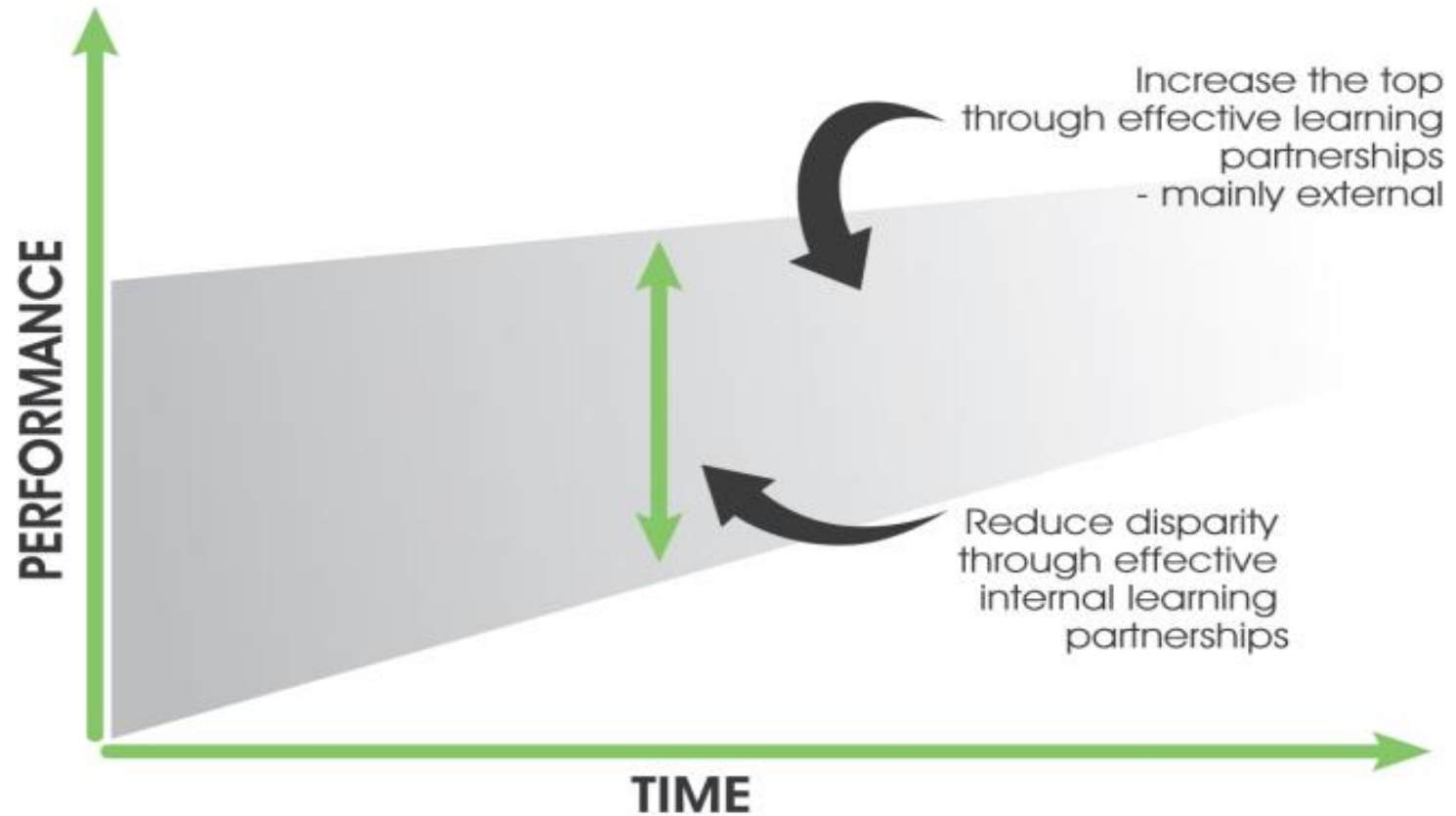
Collaboration



Innovation



We are working to achieve upwards convergence in school and pupil performance



Credit: Professor Sir George Berwick

Our activities are defined by five key principles

We have a clear methodology based on over 20 years' work

We are practitioner-led and engaged

We share and improve best practice

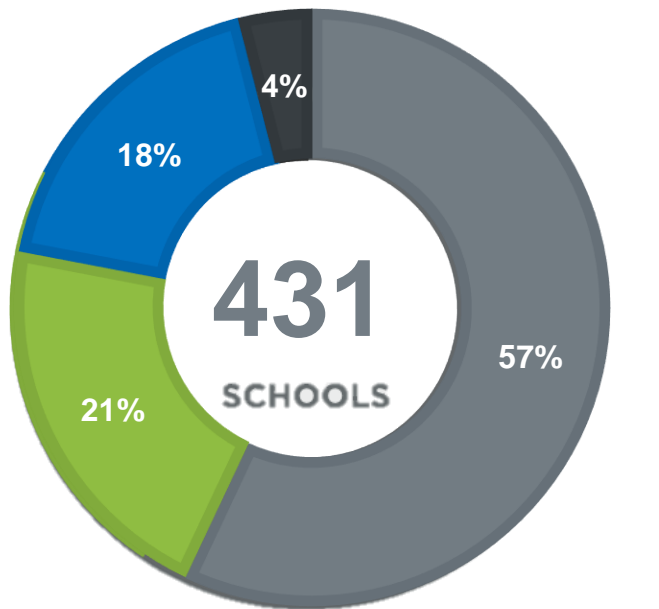
We are a national network of local partnerships

We create effective and sustainable solutions

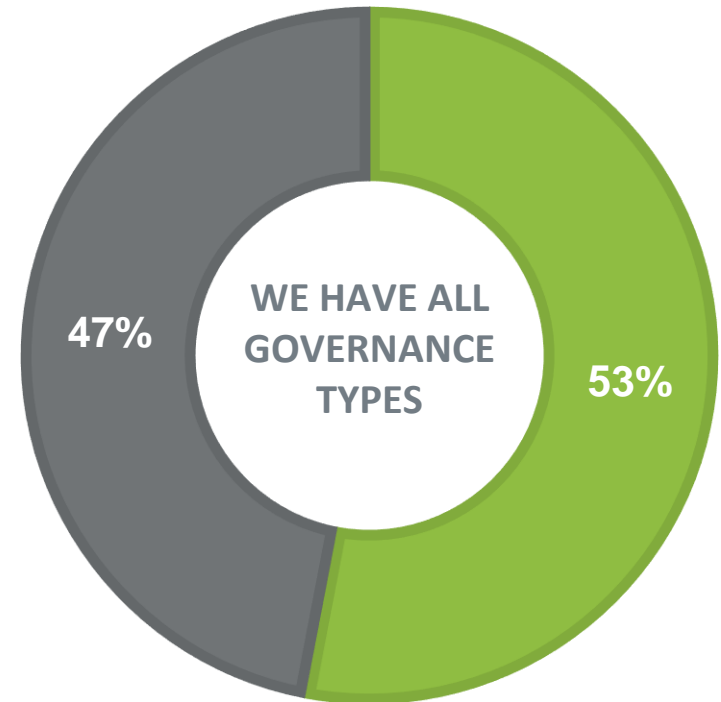
We access the best from education and business

We are an inclusive network united by moral purpose

Which is why we have all phases, governance type and context...



■ Secondary ■ Special and AP
■ Primary ■ Other (all-through, middle, 16+)



■ Academy
■ Maintained



1. Ash Field Hub
2. Astrea Hub
3. Bengeworth Hub
4. Camden Hub
5. Challenger Hub
6. Cheam Hub
7. Chiltern Hub
8. Chrysalls Hub
9. Compton Hub
10. Cornwall Hub
11. East Coast Hub
12. East London Hub
13. East Midlands South Hub
14. Haberdashers' Aske's Hub
15. Herts and Bucks Hub
16. Impact Alliance Hub
17. Insight Hub
18. Inspire Partnership Hub
19. Kingsbridge Hub
20. Lincolnshire Hub
21. Link 2 Learn Hub

22. London Special and AP Hub
23. London West Hub
24. Northants Hub
25. North East Special Hub
26. North West Hub
27. Pickhurst Juniors Hub
28. Portsmouth Hub
29. Somerset Hub
30. South East London Hub
31. Tendring Hub
32. Three Shires Hub
33. Torbay Hub
34. Transform Hub
35. Wootton Bassett Hub



In 2018/19 we
have:

431 schools

representing
over...

200,000
pupils

within

35 hubs

Pupils in our schools attain better and progress faster

Our pupils attain results above the national average

Partnership average **66%**

+2.0%

National average **64%**

Expected standard reading, writing and maths

Partnership average **48.3pts**

+1.1pts

National average **47.2pts**

Attainment 8

More of our pupils are progressing above the national average

Reading **+0.2**

Writing **+0.4**

Maths **+0.5**

Progress measures compared with national average

Partnership average **+0.14pts**

20% in the top 12%

Progress 8 compared with national average

The gap between our disadvantaged and non-disadvantaged pupils is smaller than the national average

Partnership gap **15%**

-5%

National gap **20%**

Expected standards (reading/writing/maths) gap

Partnership gap **5.1pts**

-8.3pts

National gap **13.4pts**

Attainment 8



Our schools are more likely to improve their Ofsted rating

In 2017-18, Ofsted inspected 65 schools which had been part of Challenge Partners for a year or more. Here are some of the highlights:

48% improved their Ofsted grade compared to 34% nationally. The figure increases to **52%** for schools who have been in the Network of Excellence for at least three years.

22% rated Good in their previous inspection moved to Outstanding, compared to 9% nationally.

74% of schools rated Requires Improvement in their previous inspection moved to Good, compared to 63% nationally. The figure increases to **79%** for schools in the network for three or more years.

Network of Excellence

Challenge and support for your school

QA Review

- An annual peer review
- CPD for senior leaders to train and review other schools
- Accreditation of areas of excellence in your school

School support

- Follow-up after your QA Review
- Access to support from schools across the country
- Online directory listing accredited areas of excellence

Supporting local collaboration

Funding for your local partnership

To facilitate collaboration on locally-agreed priorities

Be part of a national community

Helping you identify and connect with best practice

- Places at national events
- Leadership Development Days
- Fortnightly emails
- Regular case studies
- Discounts from partners

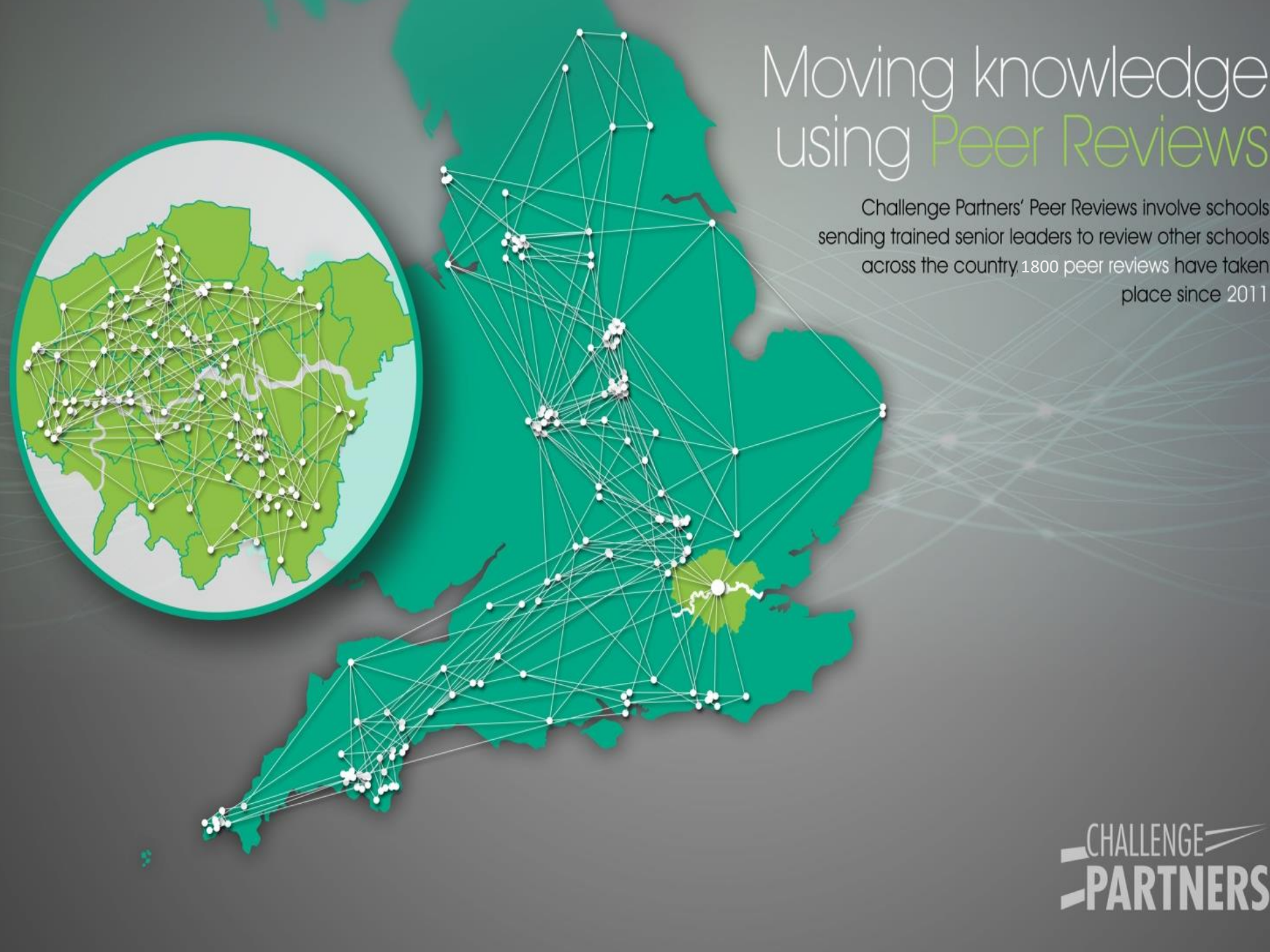
Shared leadership of common challenges

- Collective problem-solving through phase or theme specific forums
- Share emerging practice
- Contribute to research
- National policy platform



Moving knowledge using Peer Reviews

Challenge Partners' Peer Reviews involve schools sending trained senior leaders to review other schools across the country 1800 peer reviews have taken place since 2011



Quality Assurance Review

Peer audit that provides the opportunity for schools to be reviewed through an open, challenging process which supports learning and reflection

- Occurs annually over 2.5 days
- Conducted by a team of heads and senior leaders from outside your local hub and led by an Ofsted-experienced inspector
- All review activities are joint and all outputs are agreed with the school
- Development opportunity for those reviewing the schools who receive training and feedback

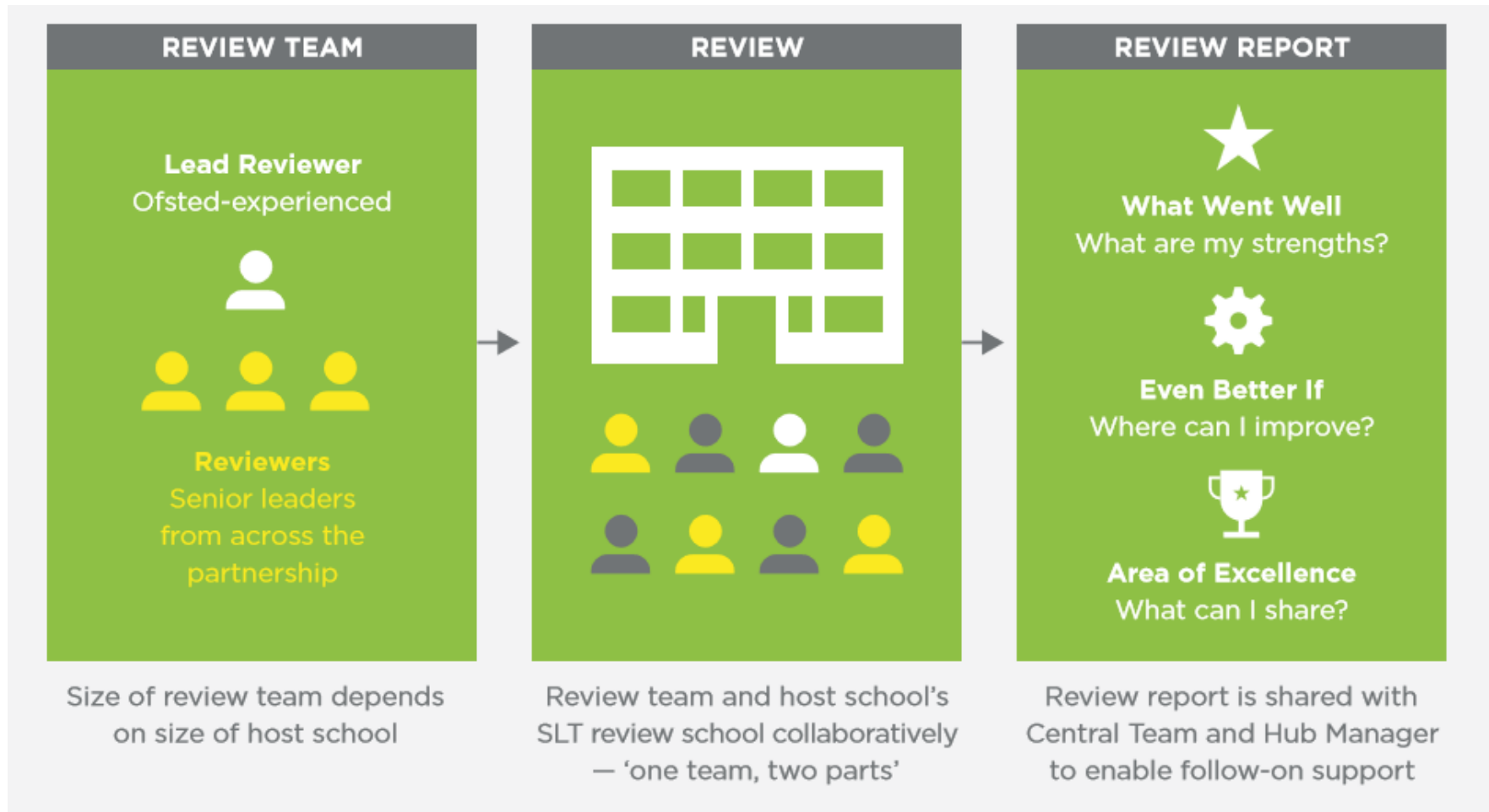


4.7 out of 5

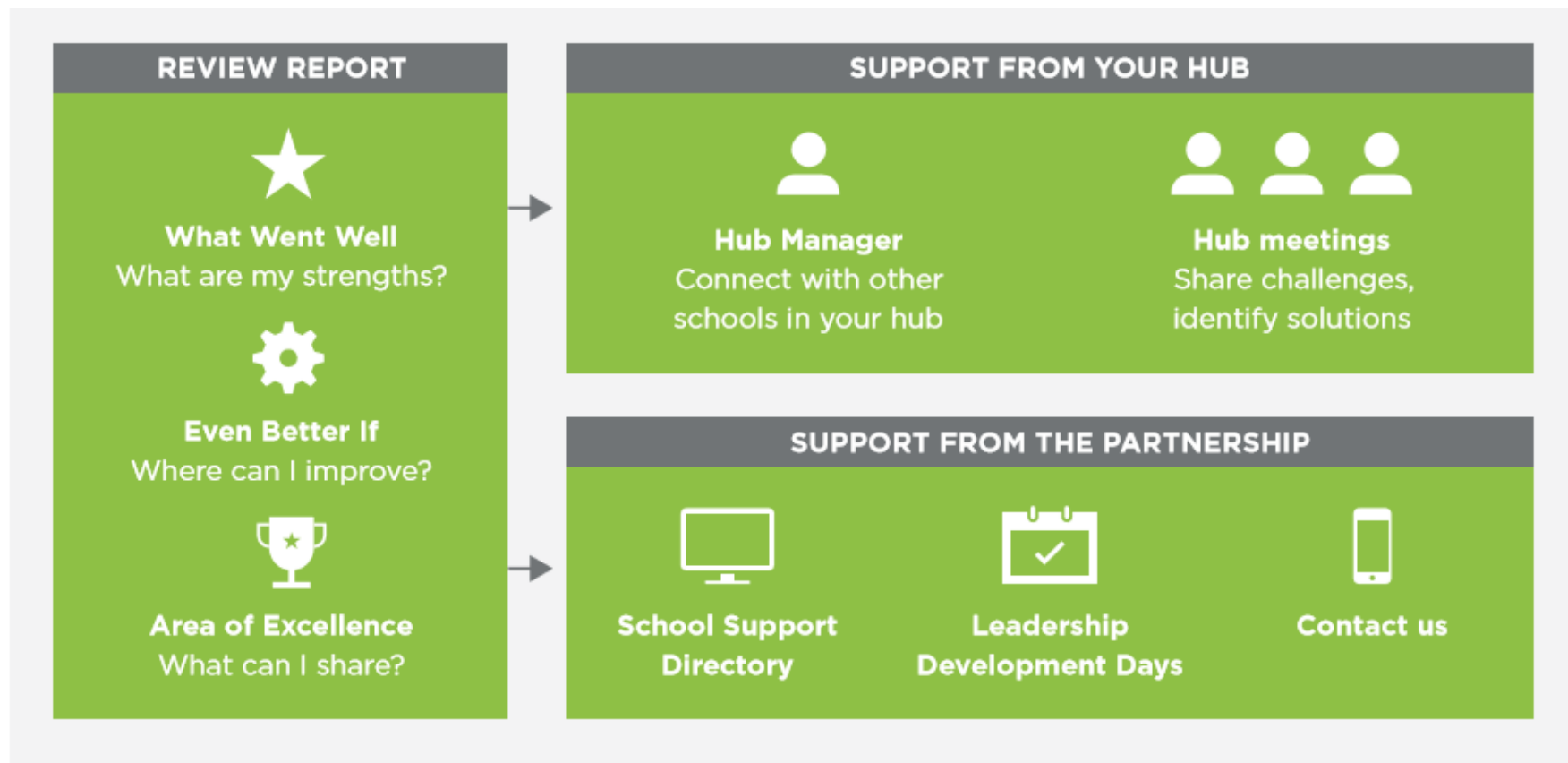
Average feedback score for
QA Review from heads &
reviewers

It is how the schools in Challenge Partners challenge each other to determine what support they might require and who can provide it.

How the Quality Assurance Review works



What happens after the Quality Assurance Review?



Pilot programmes

Growing the Top – Stand-Out Schools

- For high-performing schools looking to develop further
- Facilitated trio visits exploring systemic excellence and systemic challenges
- Cohort days showcasing approaches from HE, independent schools and business
- Independently evaluated by Professor Peter Matthews, IOE

MAT peer Quality Assurance Review

- Expert-facilitated MAT-to-MAT peer review
- Sharp focus on school improvement and impact MAT has on outcomes
- Assesses MAT against its own strategic objectives, not a pre-defined framework
- Captures and shares effective practice; identifies areas for improvement
- Provides powerful CPD for reviewers

Joining the Network of Excellence

- £7.20 per pupil – £2978 minimum fee; £9800 maximum fee
- 2-year subscription available for small schools
- Additional benefits for schools in the network for 4 years or more
- 10% discount for MATs, TSAs and Area Education Partnerships paying £20,000 or more
- Price includes:
 - An annual, expert-led peer Quality Assurance Review (QAR)
 - CPD for headteachers and leaders
 - Funding for local collaborative activities
 - Access to excellent practice in schools across England through our online School Support Directory, detailing accredited Areas of Excellence in our partner schools
 - Fortnightly newsletter
 - Opportunity to participate in other national and local events, programmes and networks at a reduced rate or no additional charge - including our National Conference, Leadership Development Days, and funded hub-led events taking place across the country
 - Membership resources in our members-only area of the website



www.challengepartners.org

info@challengepartners.org

020 2803 4970